

OPTICAL LIQUID LEVEL DETECTOR

With Amplifier inside



INTRODUCTION:

Apha-One's optical Liquid Level Detector is the device to detect whether the liquid exists or not by utilizing the refracting rate at the boundary of two media: Liquid and Gas.

It consists of IR (infrared) LED as a light source and Phototransistor as a receiver.



Features

Directly detect the liquid surface since the photo-detective area is made from polycarbonate.
Various liquid** can be detected due to its excellence of oil-proof and chemical-proof
Excellent endurance
Easy to change the level to detect the liquid by modifying the setting position of the sensor portion.
Simplifying the receiver circuit since the amplifier is installed inside.

** The inspection might be needed to check the chemical congeniality with the material of the products.

Applications

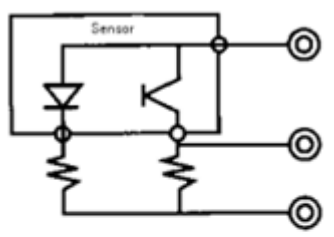
Oil level of fan heater
Water level of humidifier
Rubbing alcohol level of washer
Detector of water leak

NOTE: The verification for liquid-proof and the using conditions is needed.

Recommended Connection

External Dimension

Anode Common



Cathode Common

